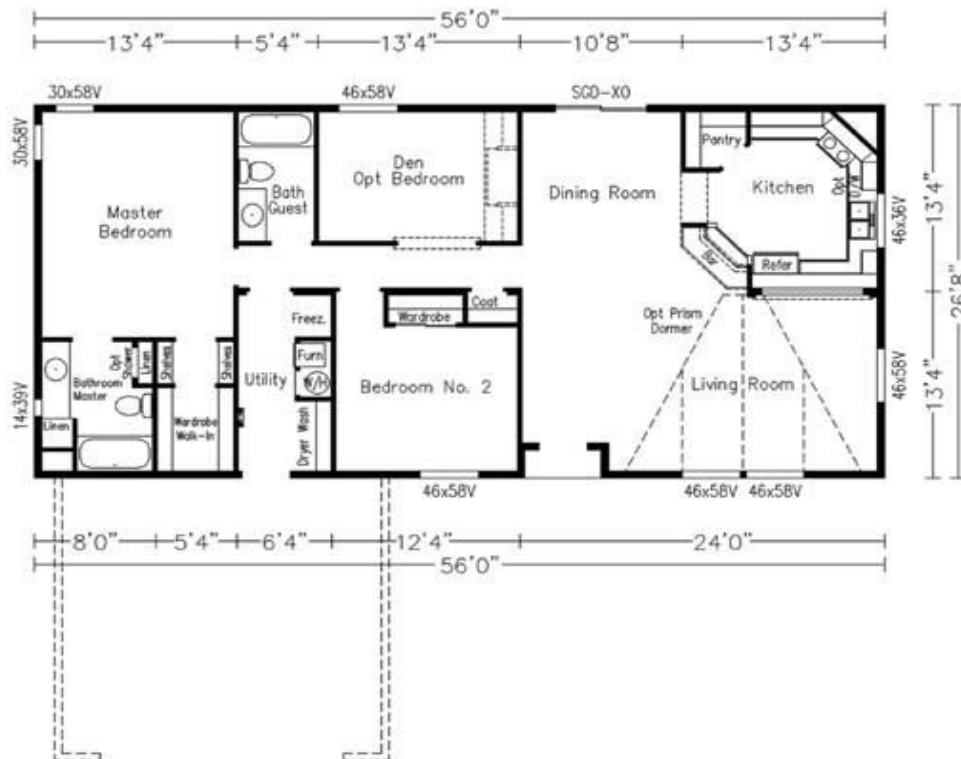




*“Point of View”*

*The raised bar features a texture finished overhead bridge with recessed canlight creating a perfect pass-thru view between the kitchen and living area. We’ve opened the top of the main wall as well, adding extra character to the spacious front living room. A recessed entry is standard and this plan is designed for a front facing attached garage making it a perfect choice for residential placement especially when enhanced by our optional prism dormer. We think it’s perfect with the standard den but change it to a 3rd bedroom if you like for a different point of view.*

*MODEL 56710 1,493 Sq.Ft.*



This artist's print shows our "Point of View" model with the standard recessed entry plus optional grid windows, architectural shingle, prism dormer with lap accents between columns, shutters and a typical site-built garage.