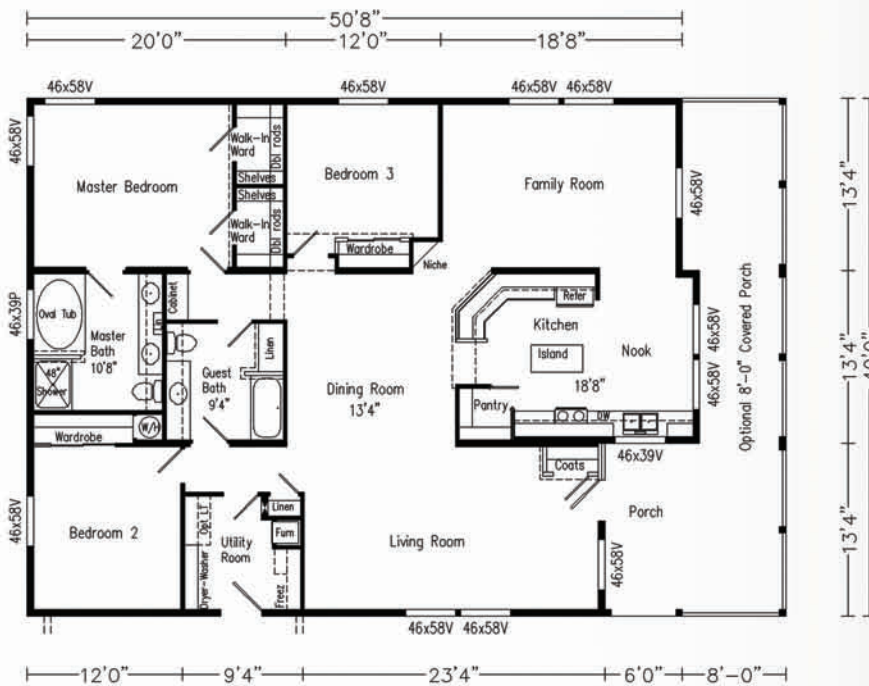


'La Casa Grande'

Model 52804 w/ P8 Porch, 1,964 Sq. Ft.



Our "Casa Grande" plan is designed for living in grand style with spacious room sizes including separation of formal living and casual family rooms, luxury baths and a gourmet kitchen with texture finished ledges above the upper cabinets. A multitude of roof line and window options are available as is our full-width end wall covered porch. The "Casa Grande" offers exceptional elegance in a large home and at a great price.

The "Casa Grande" is shown in our artist's print with optional end wall full-width covered porch, optional prism dormer and clerestory breakfast nook windows plus architectural shingles, grid windows and our deluxe exterior package combining lap accents, columns and shutters with standard siding in a very attractive but inexpensive residential appearance.

